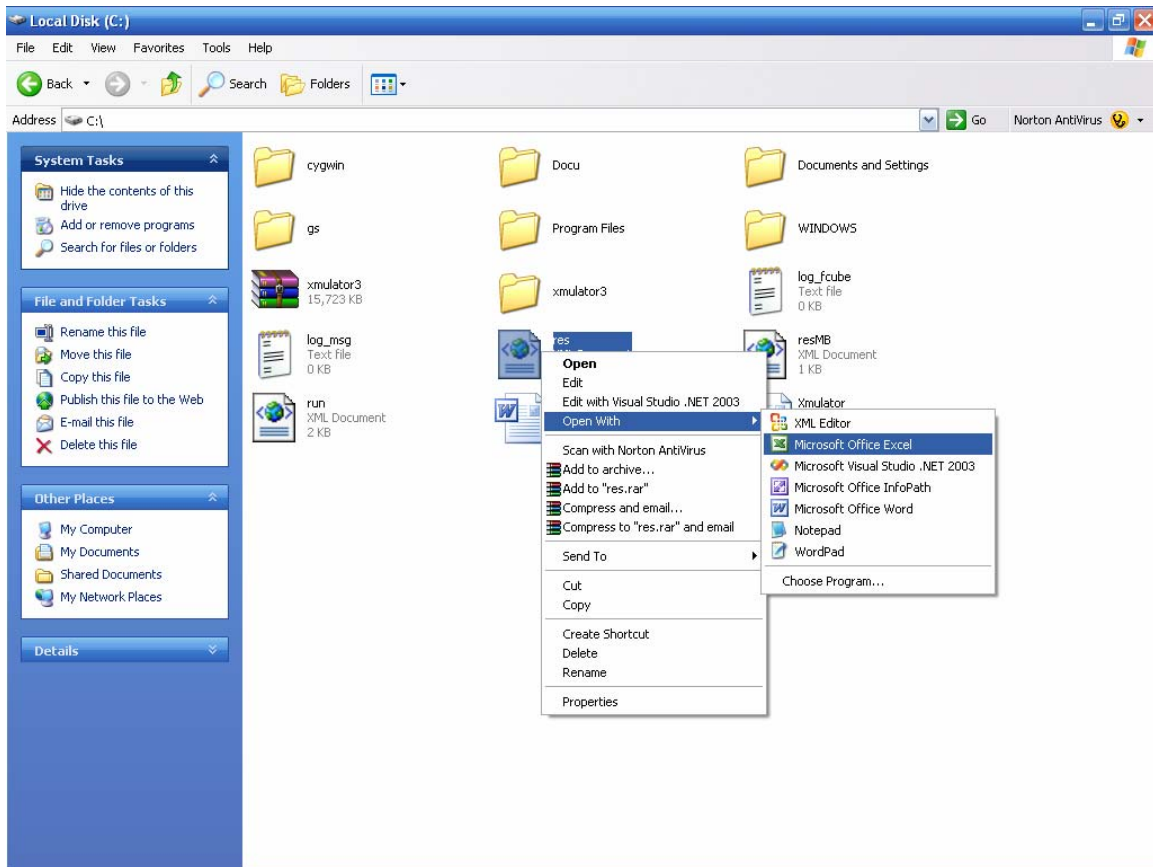


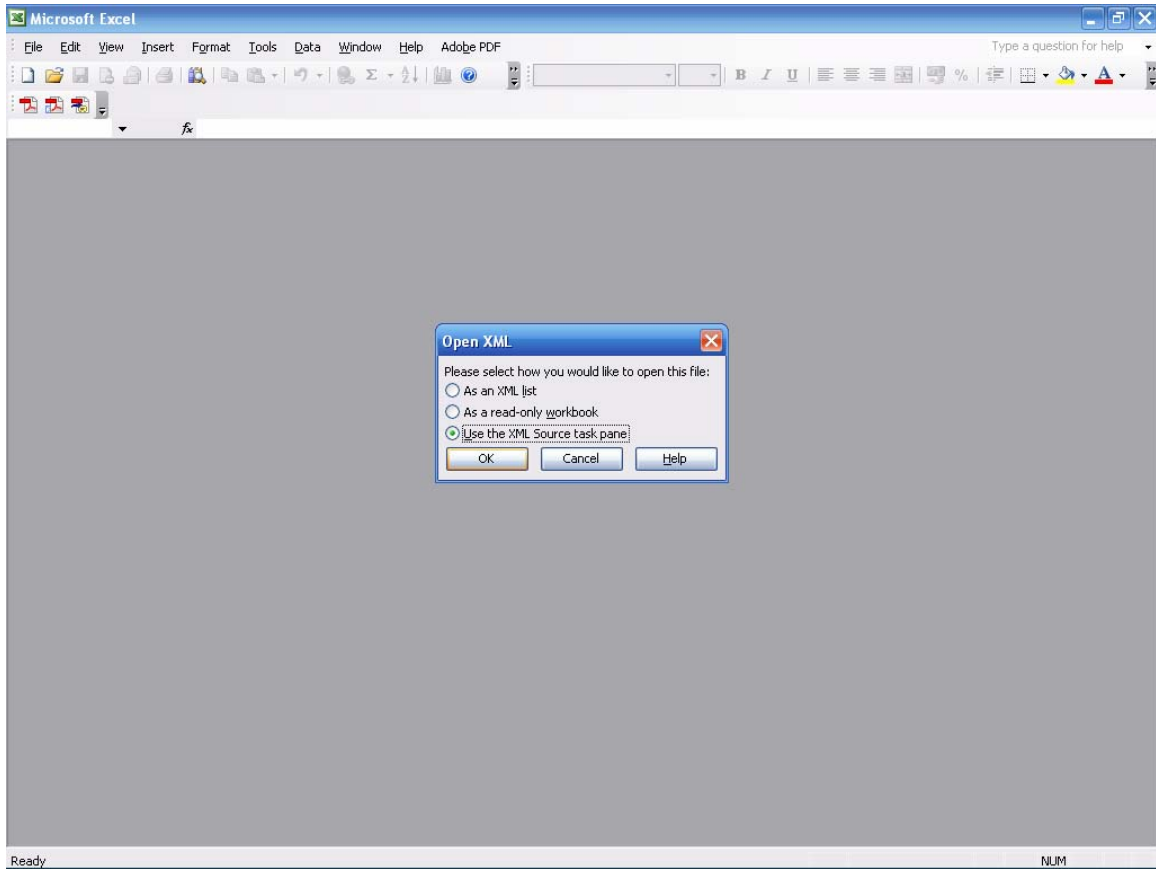
Quick Start for KaryNcube

In order to simulate a KaryNcube, in the command line you should type `Xmulator.InterconnectionTopologies.KaryNcube.exe "inputfile.xml"`. Input file is a XML file that contains all parameters of a KaryNcube. An example of a sample input file and description of its elements is included in the "run_description.xml" file. In the command line if you don't type a name of file as an input file, the default input file "run.xml" is considered as input file. In the main directory of the program, if you don't have the "run.xml" file, the default values of each parameter is considered.

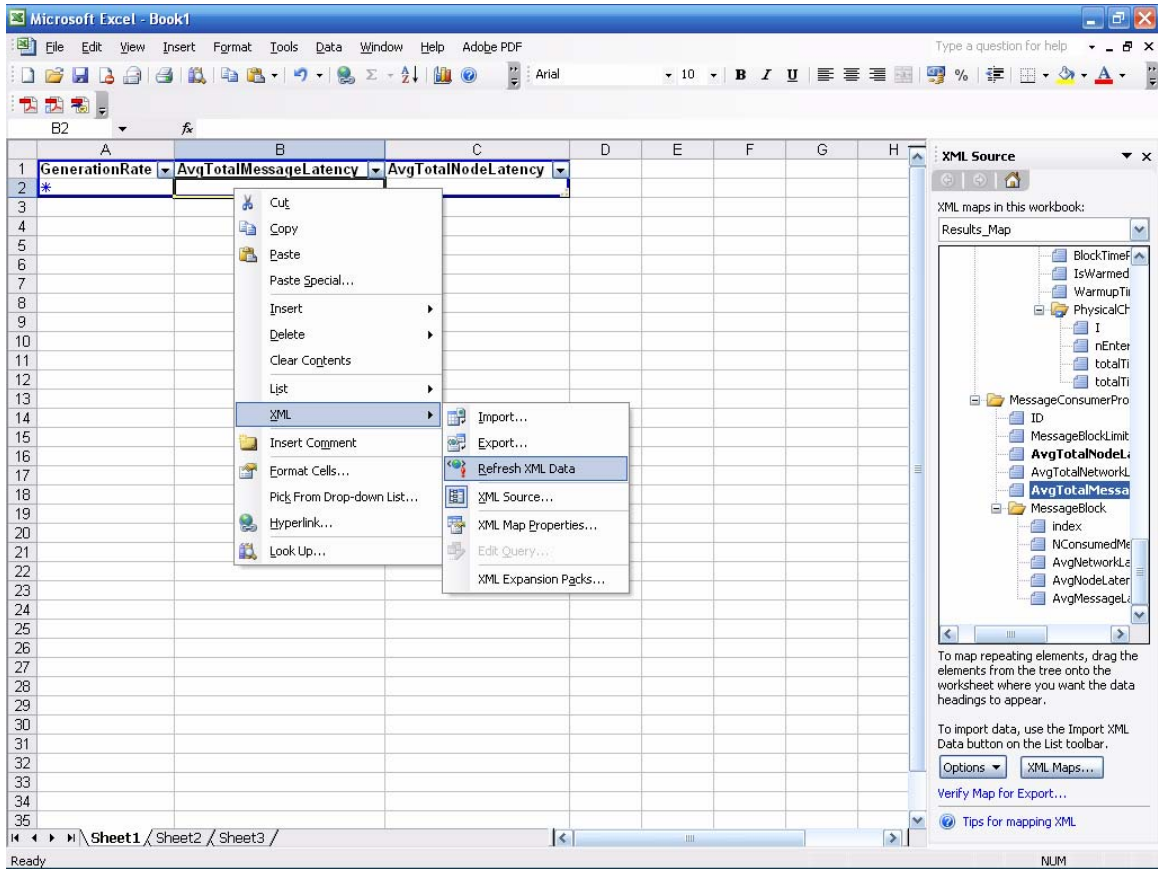
After running the simulation, two XML files will be created. One of them is "res.xml" which contains all available results of the simulation. Another one is "resMB.xml". In this file only total results that message block size shows its limit such as "avgTotalMessageLatency", "avgTotalNetworkLatency", etc are given. One way for viewing the result of the simulation is using Microsoft Excel 2003. For this purpose you should right click on the xml file and from "open with" menu choose "Microsoft Office Excel".



Then you should choose "Use the XML Source task pane".



Now you have an excel file that on the right column you could see all result tags. You should just select the required tags and drag it to the excel sheet. Then right click on the sheet and from XML menu choose "Refresh XML Data".



Now you can see the results.